



Quality, Precision
and Cost Effective
Casting Solutions

WALTEK
Investment Casting
Since 1970

800.937.9496

www.waltekinc.com

Made in the USA
MN and OH Facilities

WALTEK Capabilities

**For the Healthcare Industry
Relating to COVID-19**

Waltek is prepared to help the Medical Supply Chain

- **Waltek Inc. has been a trusted supplier to Medical OEM's for over 25 years**
- **We stand ready to assist current and new Medical customers needing to ramp up production of Healthcare products relating to COVID-19**
- **Our production operations remain open – some customers have already contacted us and need us to operate as a “CRITICAL INFRASTRUCTURE BUSINESS ESSENTIAL TO HEALTHCARE”**

Current customers – please contact us about how we can assist with current part demands

New customers – please contact us, we can tool up and support your part needs via our investment casting process

- **Metal parts less than 40 lbs., low-medium volumes – details on following slides**

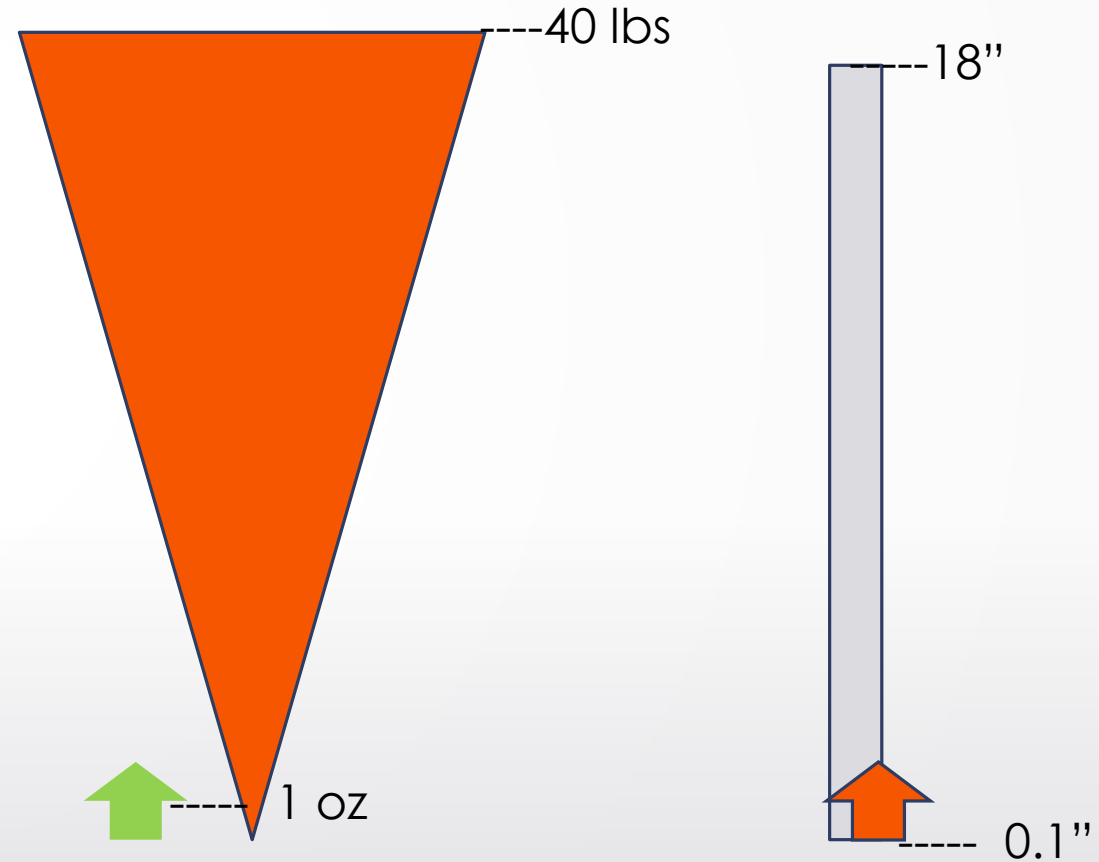
A little bit about Waltek:

- 50 years in business, privately owned and operated, Made in USA
- Supplier to OEM's in Medical, Aerospace, and heavy Industrial Markets
- Facilities in Minnesota and Ohio, ISO9001:2015 Certified



Part Size Specifications

- Finished part sizes: 0.1" To 18"
- Weight: <1 oz to 40 lbs
- Tolerances to +/- .005" In./In.
(Premium tolerances on case by case situations)
- Detailed internal cavities
- Prototype, short & long production runs



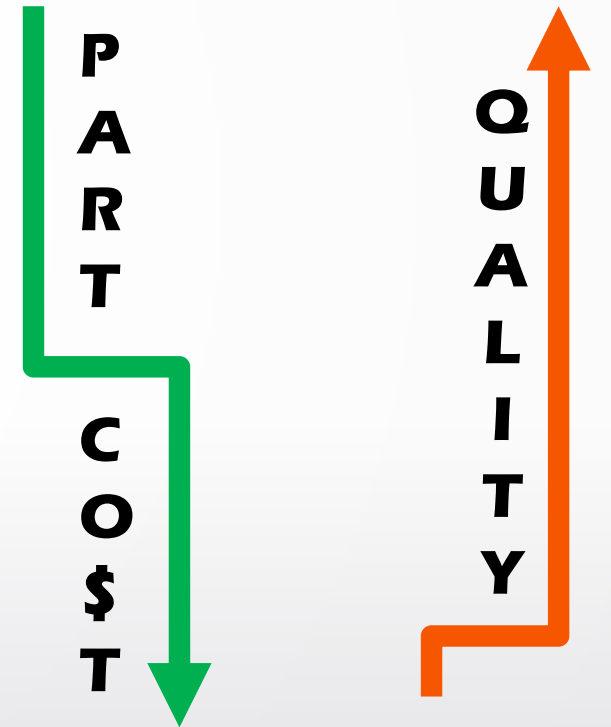
Ferrous, Non-Ferrous Metals & Alloys

- Tool steels
 - A2
 - S7
 - D2
- Bronze alloys
 - 932
 - 875
- Aluminum alloys
 - 356
 - 357
 - 355
- Carbon steels
 - 1000 series
 - 4000 series
 - 8000 series
- Nickel alloys
 - Hastelloy
 - Monel
- Stainless steels
 - 17-4
 - 316
 - 304



Investment Casting Benefits

- **Cost-effective**
 - Low tooling costs
 - Reduce or eliminate machining costs
 - Convert fabrications/assemblies/weldments into one piece casting
- **High performance alloys**
- **Ferrous & non-ferrous metals**
- **Can make complete and unusual shapes**
- **Value Added Services**



Value Added Services

- Broaching
- Milling
- Drilling
- Tapping
- Tool building
- Sandblasting
- Powder coating
- Kan-Ban
- Light assembly
- Packaging
- Heat treated
- NDT
- Painting
- Straightening



Prototypes – 4 to 7 Day Turnaround

- Use 3D printed parts (SLA, SLS)
- Patterns made to current design
 - No need for a wax mold
- Parts suitable for design validation & field endurance testing

DAY 1

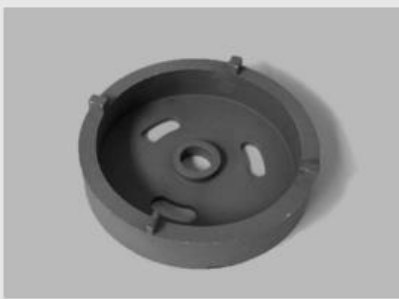
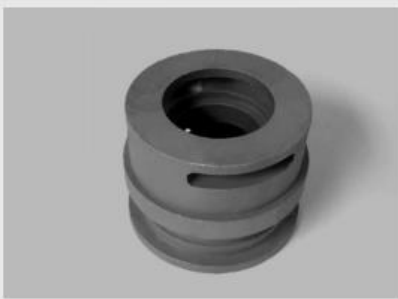
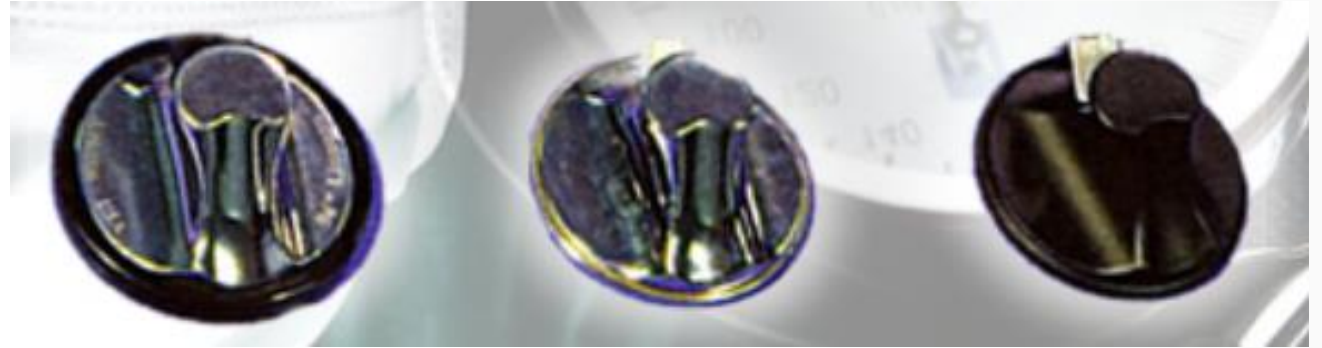
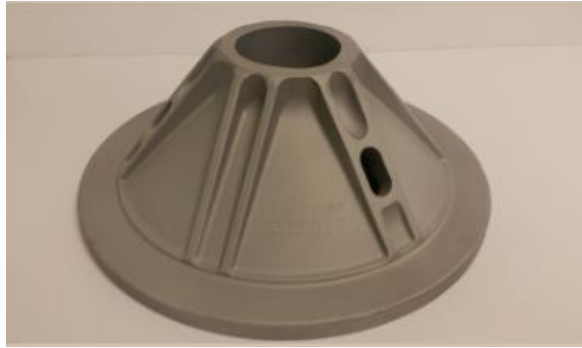
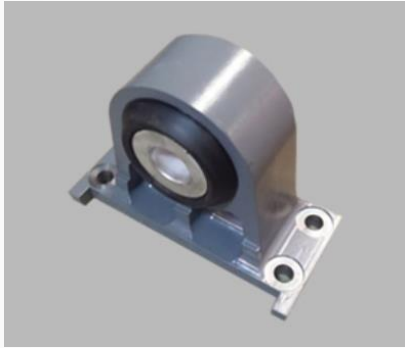
Submit prototype order to Waltek

DAY 5-7

Prototype ready from Waltek

Deliver prototype to Customer

Component Examples



Customers Include



All Markets Served





The **WALTEK Advantage**

- **Concurrent engineering assist with upfront design**
- **11 grades of castings per ASTM2175 specifications –
Diverse metal capabilities to meet your needs**
- **'As Cast' lead time less than 18 days**
- **Personalized customer service for EVERY customer**
- **Operational Excellence Focus**
 - **Safety, Quality, Deliver, Cost**
- **Experienced & dedicated Waltek staff**



Quality, Precision
and Cost Effective
Casting Solutions

WALTEK
Investment Casting
Since 1970

Call us today
800.937.9496

www.waltekinc.com

Made in the USA
MN and OH Facilities